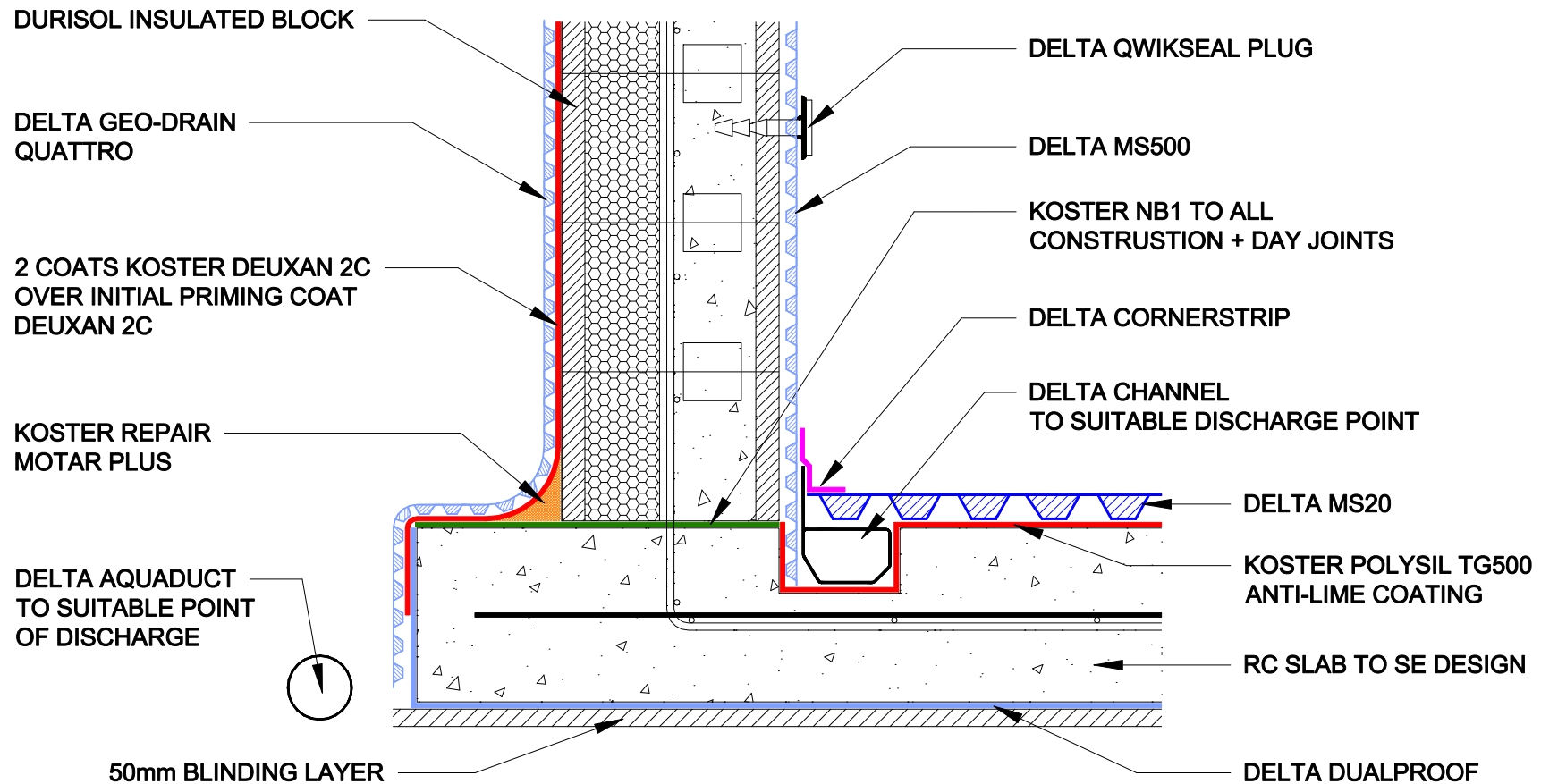


DURISOL BLOCK CONSTRUCTION INTERNAL & EXTERNAL WATERPROOFING



DELTA MEMBRANE SYSTEMS LTD.

DRAWING No: DW-510-1- (D)

DRAWING TITLE: DURISOL CONSTRUCTION COMBINED
INTERNAL & EXTERNAL WATERPROOFING

DELTA HOUSE, MERLIN WAY, NORTH WEALD, EPPING, ESSEX CM16 6HR
TEL: 01992 523523 FAX: 01992 523250

OFFICE USE:

REVISION No:
1

REVISION DATE:
March 2019

Drawn By:

Checked By:

Scale:

System Files: PDF / DWG

DRAWING NOTE:

This drawing is for illustrative purposes only. Drawing not to scale.

PROJECT / COMMENTS:

GRADE 3 HABITABLE IN ACCORDANCE WITH BS8102 (2009), COMPLIANT WITH NHBC & PREMIER GUARANTEE FOR GRADE 3 HABITABLE SPACES. SUITABLE FOR ALL WATER TABLE CLASSIFICATIONS.

DRAWING NOTES: All installations to be carried out in strict accordance with manufacturer's installations instructions. For further assistance contact Delta Technical on 01992 523 523 or email technical@deltamembranes.com